

# 125 E KALAMAZOO ST



**GILLESPIE**  
*GROUP*

**AVAILABLE SPACE FOR LEASE**  
**1,385 SF**



**DOWNTOWN  
LANSING**

**LANSING  
CENTER**

**LANSING  
LUGNUTS**

**SITE**

**OFFICE • RESTAURANT • RETAIL**

## PROPERTY INFO

- Brand new interior buildout (office, ADA restroom, two rooms with sinks and open retail space)
- Large storefront windows
- Prominent building signage opportunities
- Adjacent parking lot spaces included in lease
- Footsteps from Washington Square
- Close proximity to the Michigan State Capitol: 0.4 miles
- Easy access to I-496

## RENTAL RATES

- \$16.00/SF, NNN
- Triple nets estimated at \$5.50/SF

## CONTACT

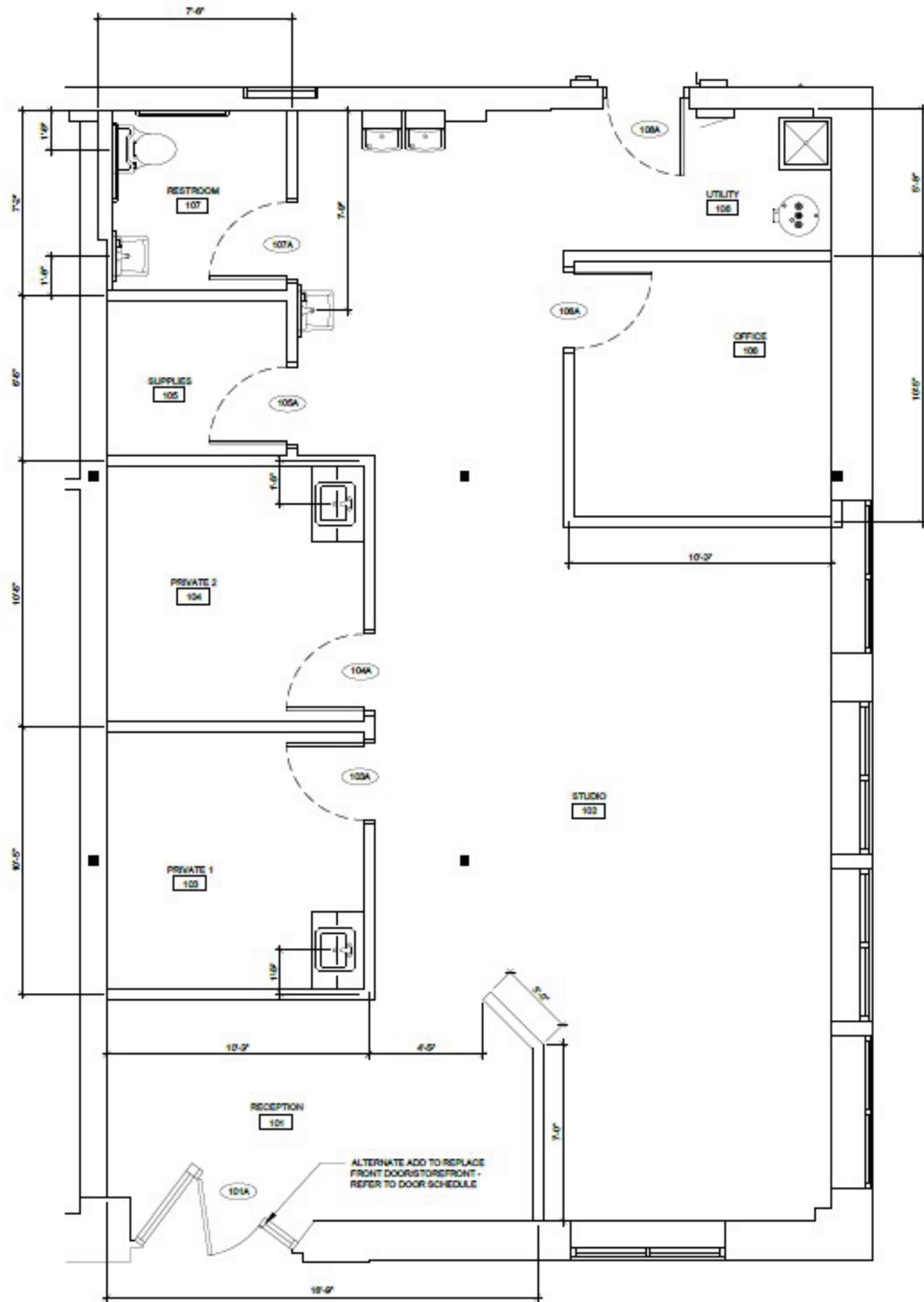
### MEGAN WEBER

Leasing & Business Development Manager  
517.333.4123  
mweber@gillespie-group.com

**GILLESPIE-GROUP.COM**



**GILLESPIE  
GROUP**



## FLOOR PLAN

