

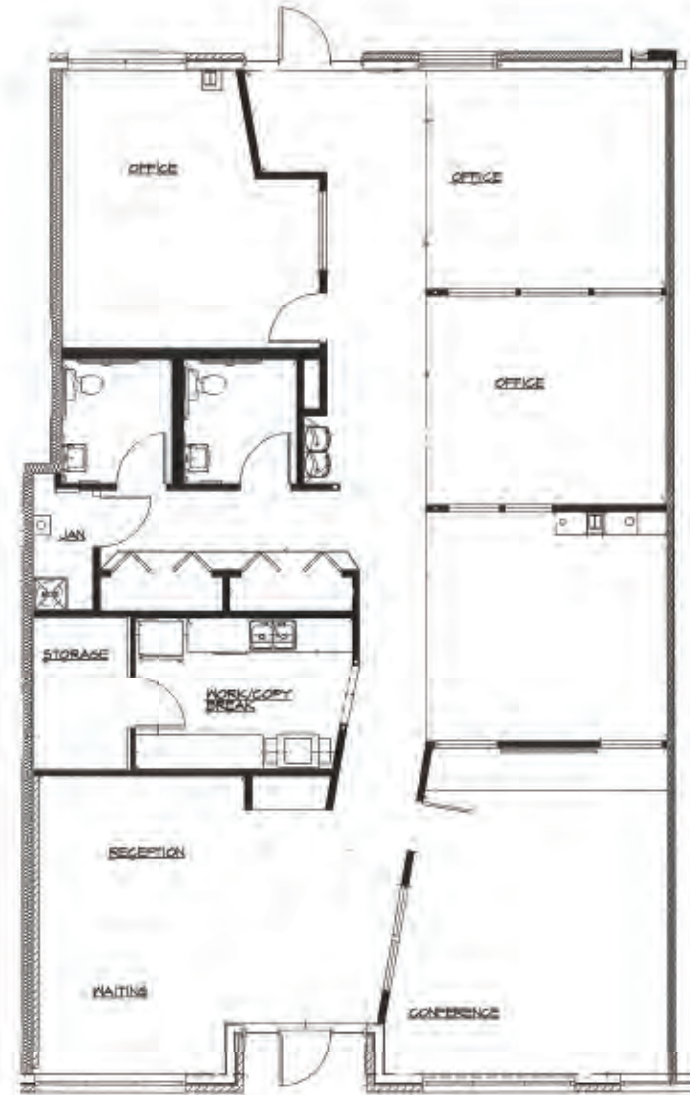
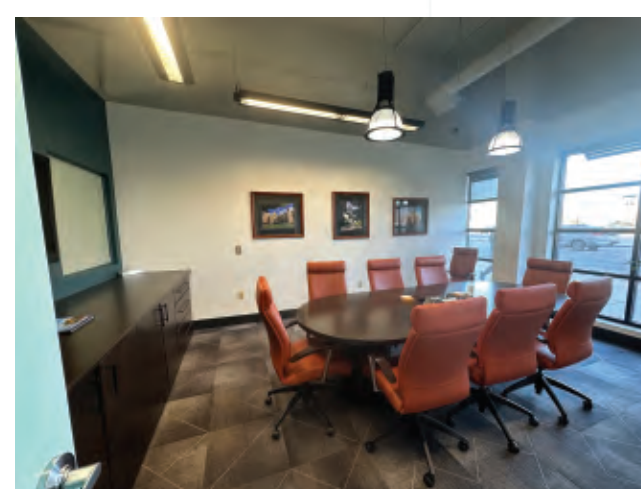
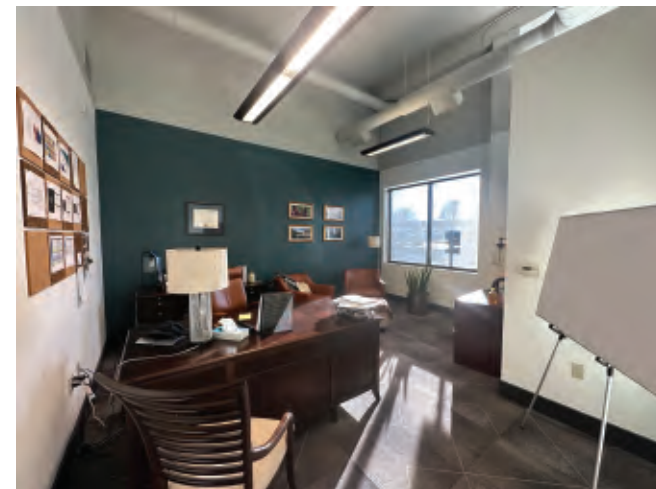
NOW LEASING 2,290 SF

500 E MICHIGAN, LANSING, MI



500 E MICHIGAN AVE, LANSING MI

AVAILABLE FOR LEASE
NOW LEASING: 2,290 SF



PROPERTY INFO

- 2,290 SF available
- Available to move-in March 2023
- Michigan Avenue visibility
- Ground floor accessibility
- Ample free on-site surface parking
- Located in the middle of the Stadium District
- Co-tenants include Lansing Regional Chamber of Commerce, Choose Lansing, Biggby Coffee, Tri Star Trust, Diversified Title Company, Sidecar Slider Bar & Coontz Law
- \$20.00/SF NNN
- Triple nets estimated at \$6.50/SF

CONTACT

MEGAN WEBER

Leasing & Business Development Manager
517.333.4123
mweber@gillespie-group.com

GILLESPIE-GROUP.COM





GRAND RIVER

MARKETPLACE APARTMENTS

MPSOCIAL

JACKSON FIELD

OUTFIELD LOFTS

LANSING STATE CAPITOL
0.6 MILES

MICHIGAN STATE UNIVERSITY
2.7 MILES

500 E MICHIGAN AVE

STADIUM DISTRICT

BLOCK600
MARKET APTS HOTEL

FUTURE DEVELOPMENTS
EXISTING DEVELOPMENTS

W. IONIA ST.

W. OTTAWA ST.

MICHIGAN AVE

E. ALLEGAN ST.

E SHIAWASSEE ST.

N. CEDAR ST.

N. LARCH ST.

S. CEDAR ST.

S. LARCH ST.

S. WASHINGTON SQUARE

N. GRAND AVE.

S. GRAND AVE.

S. WASHINGTON SQUARE

HILL ST.

S. HOSMER ST.

S. 8TH ST.

